



SCOPE
NEW YORK 2020

malbec



malbec

*Pierre Malbec was born in 1956
in Saint-Paulet de Caisson South of France.*



From singular realism to geometric reconstruction

Deriving out of an untypical upbringing, Pierre Malbec's creations are the result of an encounter through everyday objects, a reflection of form and function, the memory of a moment from his life. Inspired by the post-war period, a vast artistic research laboratory where the most beautiful modernist creations were born, Malbec began his creations between the 1980s and 1990s. His territory is an archaeology in the process of becoming, where accumulated scrap metal still carries the stigma of its past functions, vestiges of an obsolete industry and a society in permanent "consumption".

Through the alchemy of the speech between the artist and the medium, the artwork is reconstructed in a history where aesthetics is transcended by the magic of the seer who has become a visual artist. A beam in balance and immodest seems to count its history and show us the traces barely touched up by pigments of its past where the artist restores the idols of yesteryear.

Malbec questions the shreds of mystery and magnifies the remains of stratified colors into a superb geology. He uses and transforms his medium many times, bringing it back to life through the magic of recycling. This work of sculpture and color is reflected in the artist's pictorial compositions, which leave the surface free rein to its nature and provide the spectator with purified figurative abstractions that are constantly renewed. Thus, the yellow ochre shapes, the soft pastels, the greens, blues and deep browns are structured by skillful scratching and reveal the flatness of the emerging color.

For almost ten years, Pierre Malbec's compositions have been increasingly successful. At first glance, they appear to be decorative compositions, mastering space and reflecting an innate sense of form, a correctness of line, thus dissociating the artist from the decorator. His production is dense, the artist constantly pushes the limits of figuration towards a singular abstraction and the presence of forms plays with our vision of the work which seduces us with the simplicity of its language.



Form New-York N° 443

Unique artwork - Acrylic on wood

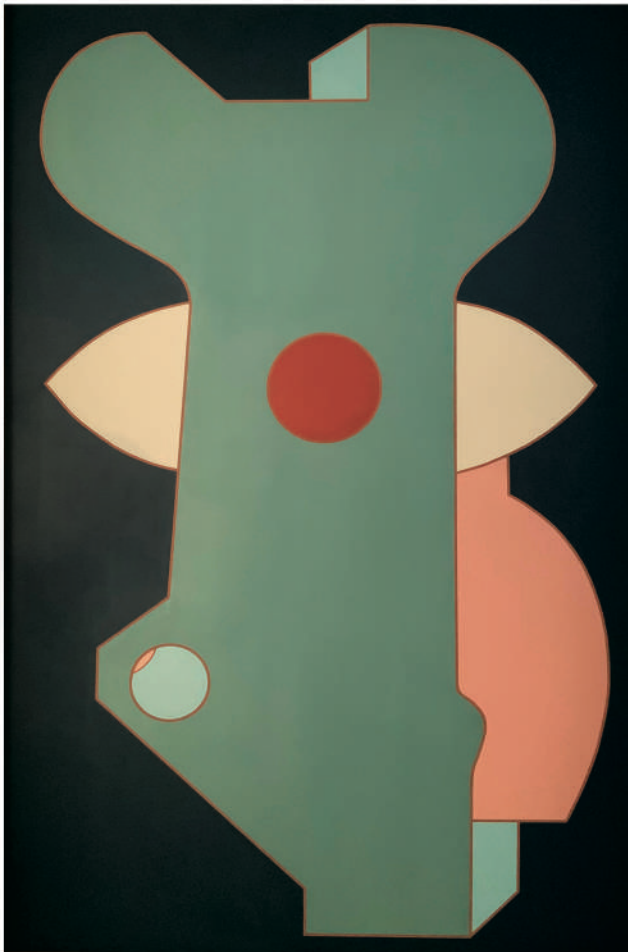
48 in.x63,8 in.



Form New-York N° 454

Unique artwork - Acrylic on wood

87,6 in.x56,25 in.

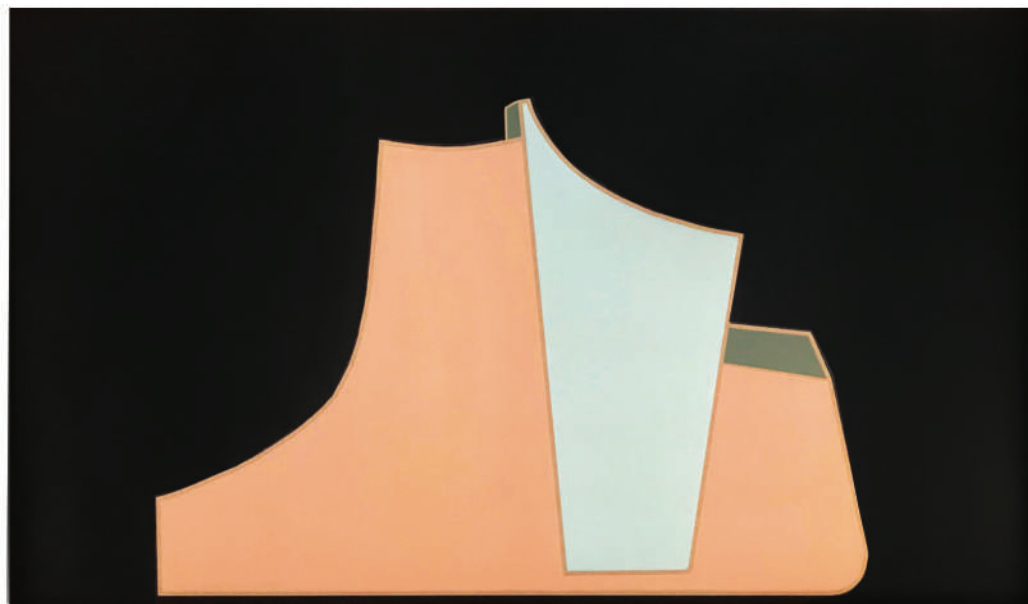
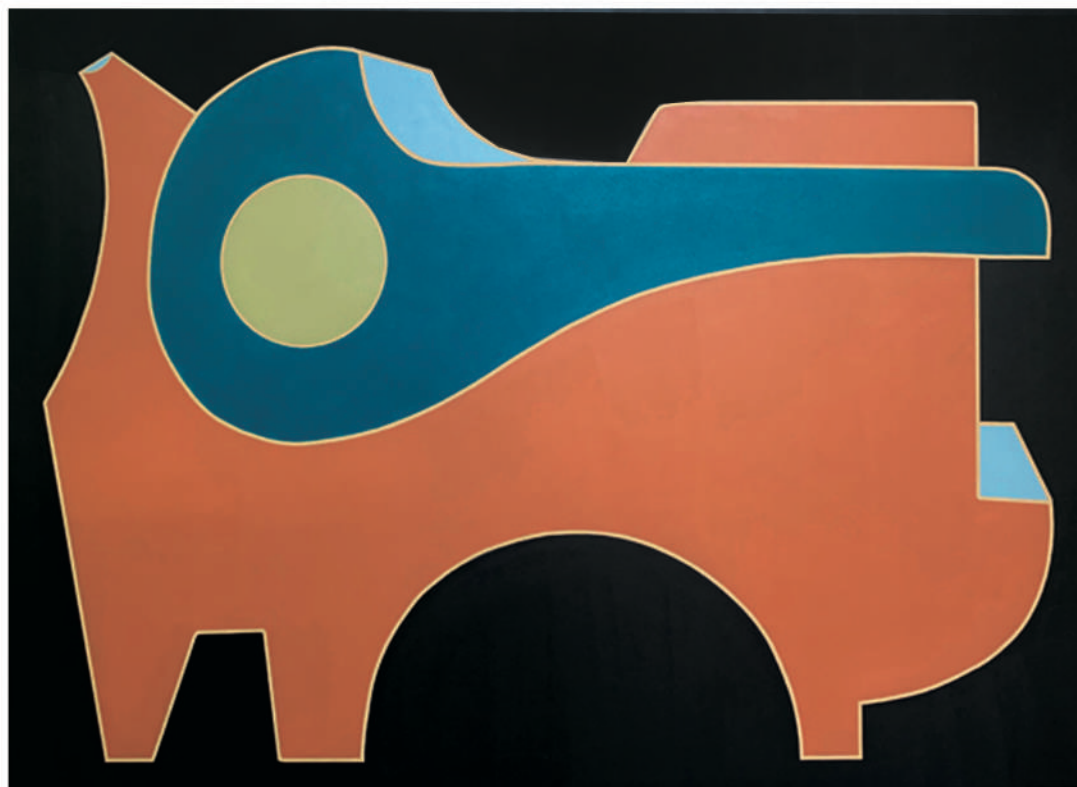


Detail New-York N° 417

Unique artwork - Acrylic on wood

40,2 in.x40,2 in.

Form New-York N°479
Unique artwork - Acrylic on wood
48 in.x68,9 in.



Form New-York N°466
Unique artwork - Acrylic on wood
35 in.x57,9 in.

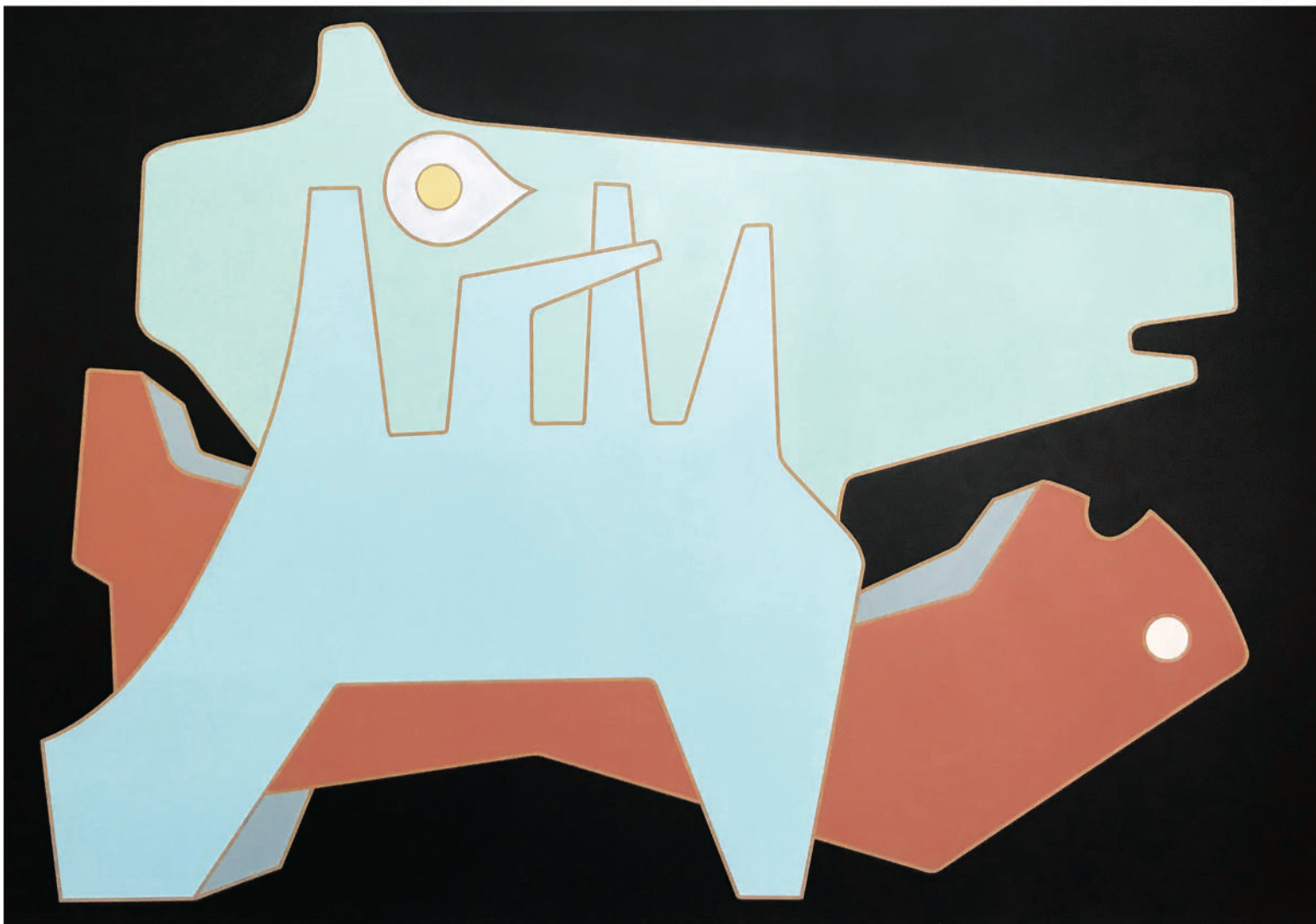


Figure New-York N°433

Unique artwork - Acrylic on wood

57,9 in.x81,9 in.



Detail New-York N°459 C

Unique artwork - Acrylic on wood

48 in.x48 in.



Detail New-York N°459 A

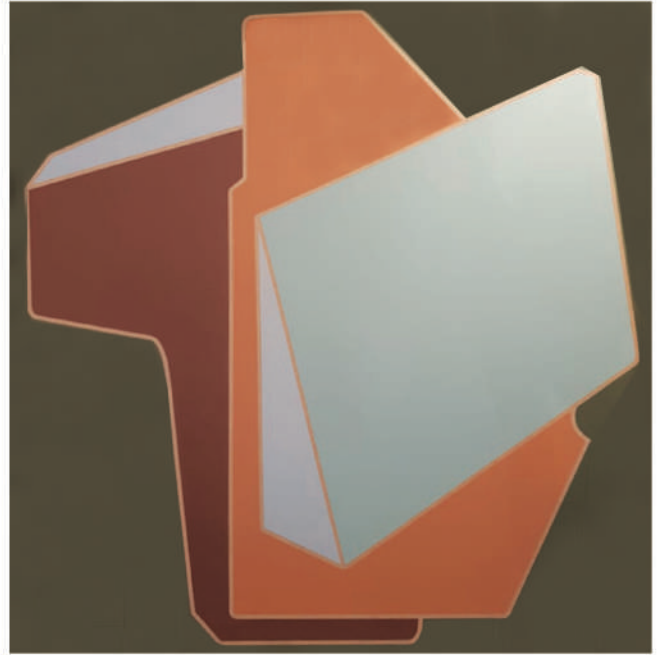
Unique artwork - Acrylic on wood

48 in.x48 in.

Form New-York N°409

Unique artwork - Acrylic on wood

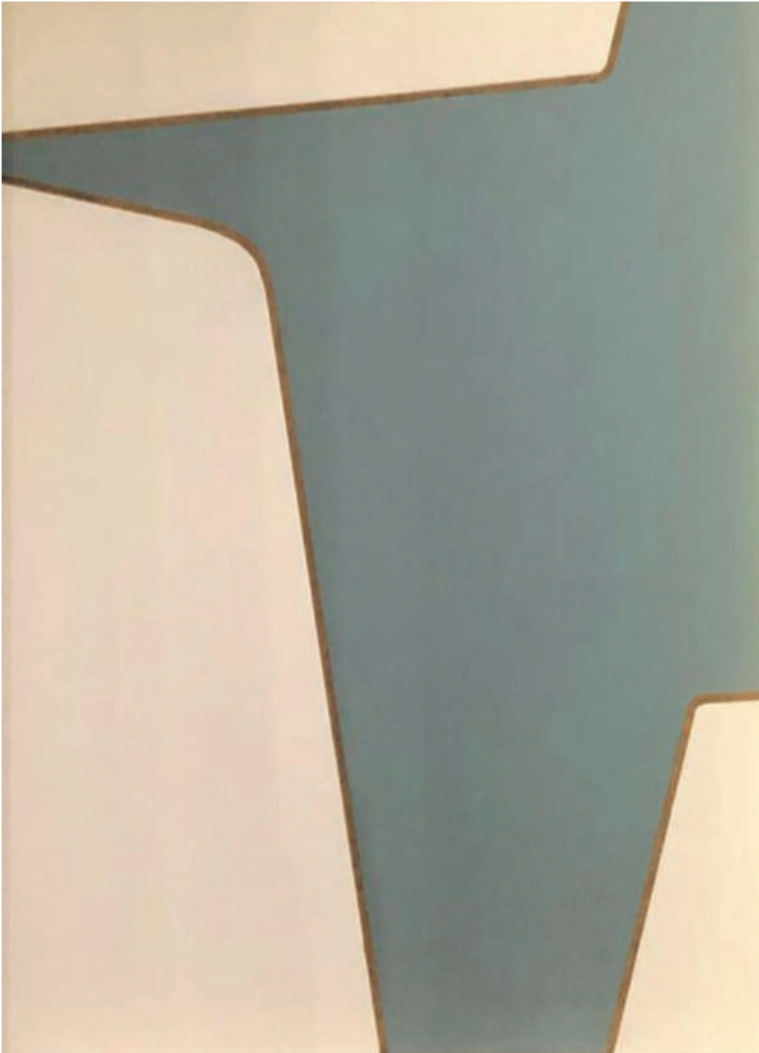
40,2 in.x40,2 in.



Detail New-York N°435

Unique artwork - Acrylic on wood

33,5 in.x23,3 in.



Detail New-York N°410

Unique artwork - Acrylic on wood

40,2 in.x40,2 in.



Form New-York N°398

Unique artwork - Acrylic on wood

64,2 in.x48,2 in.



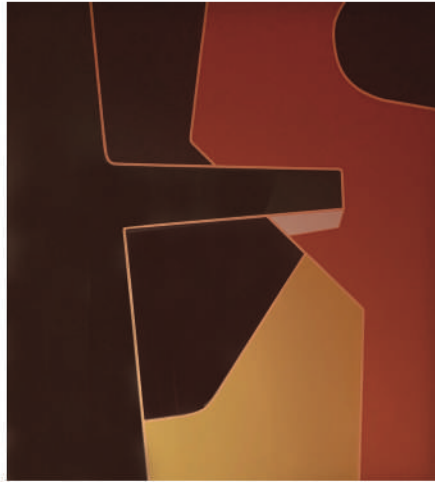
Form New-York N°460

Unique artwork - Acrylic on wood

65,4 in.x47,3 in.



Detail New-York N°341
Unique artwork - Acrylic on wood
41,3 in.x41,3 in.



Detail New-York N°481
Unique artwork - Acrylic on wood
42,9 in.x40,6 in.



Form New-York N°483
Unique artwork - Acrylic on wood
60,2 in.x59,1 in.



Detail New-York N°500
Unique artwork - Acrylic on wood
27,6 in.x70,9 in.

Form New-York N° 403

Unique artwork - Acrylic on wood

68,9 in.x33,5 in.



Detail New-York N° 450

Unique artwork - Acrylic on wood

43,4 in.x37,3 in.





Detail New-York N° 496

Unique artwork - Acrylic on wood

56 in.x82,3 in.



Form New-York N° 488

Unique artwork - Acrylic on wood

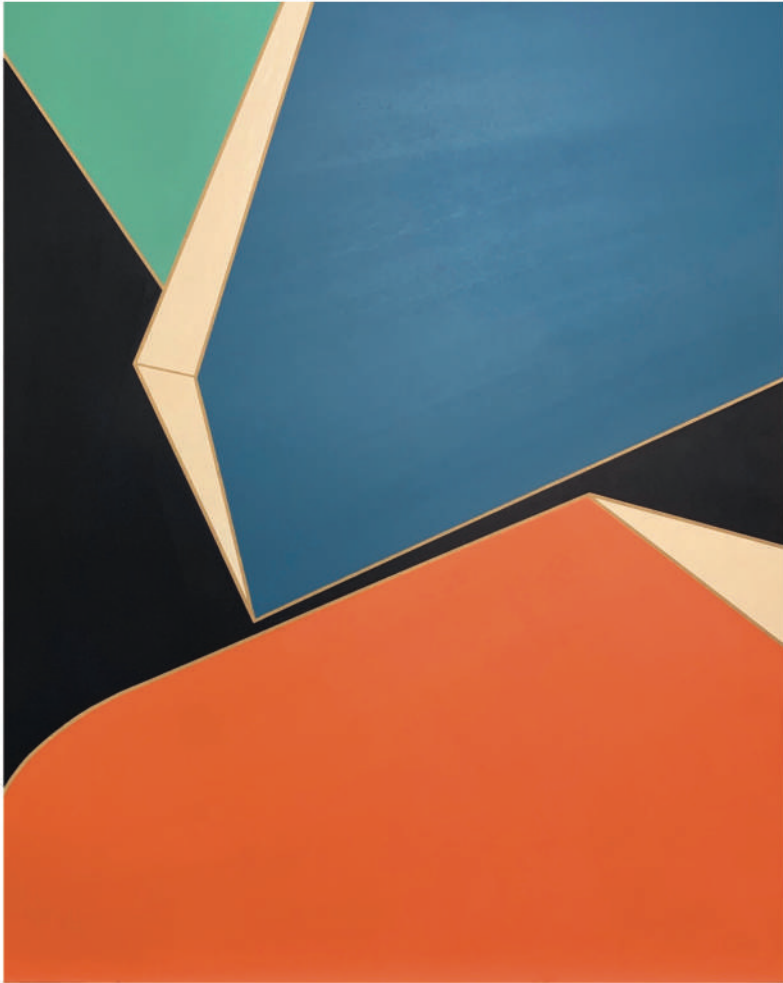
46,3 in.x82,3 in.



Form New-York N° 487

Unique artwork - Acrylic on wood

48 in.x68 in.



Detail New-York N° 489
Unique artwork - Acrylic on wood
63,4 in.x50,8 in.



Form New-York N° 486
Unique artwork - Acrylic on wood
68,3 in.x48,2 in.



Form New-York N° 492

Unique artwork - Acrylic on wood

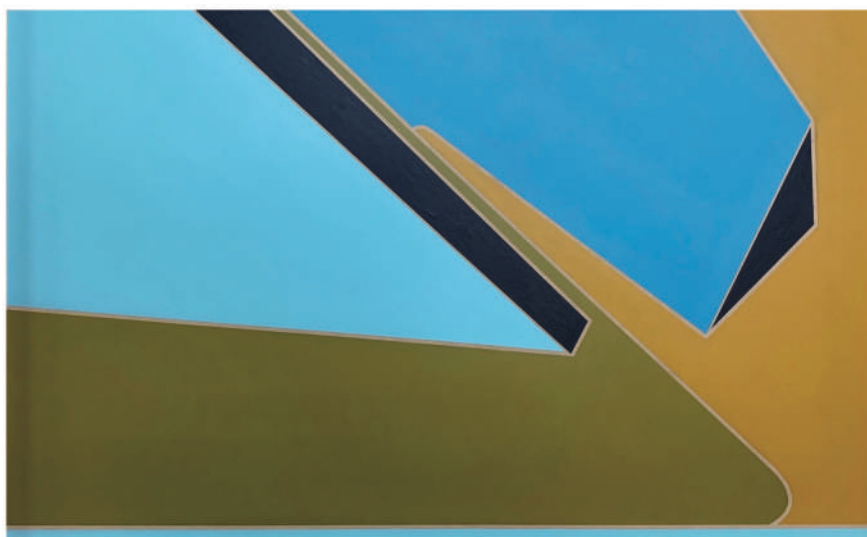
41,3 in.x41,3 in.



Form New-York N° 490

Unique artwork - Acrylic on wood

41,3 in.x41,3 in.



Detail New-York N° 494

Unique artwork - Acrylic on wood

34,3 in.x53,2 in.

Form New-York N°493

Unique artwork - Acrylic on wood

41 in.x41,3 in.



Form New-York N°499

Unique artwork - Acrylic on wood

41,3 in.x28,7 in.





Form New-York N°498

Unique artwork - Acrylic on wood

41,3 in.x28,7 in.



Detail New-York N°491

Unique artwork - Acrylic on wood

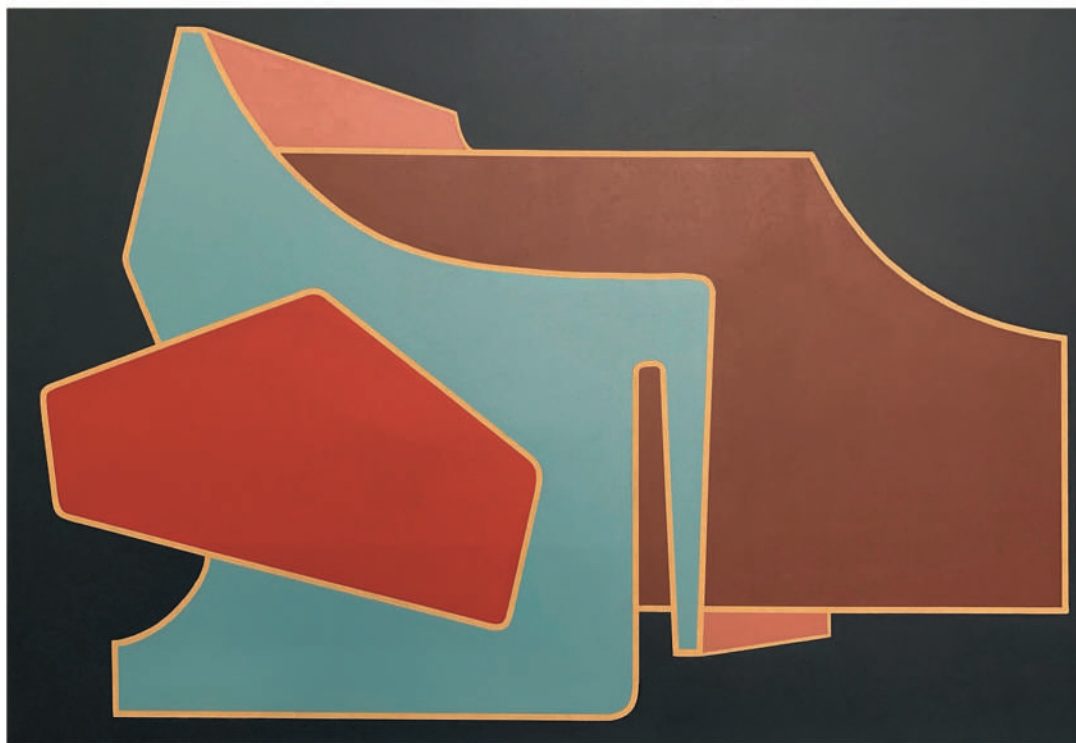
41,3 in.x41,3 in.



Detail New-York N° 495

Unique artwork - Acrylic on wood

56 in.x82,3 in.



Form New-York N° 497

Unique artwork - Acrylic on wood

28,7 in.x41,3 in.



Form New-York N°480

Unique artwork - Acrylic on wood

58,7 in.x60,2 in.



GALERIE [L'ATELIER 55]

MOBILIER DE COLLECTION
ART & CERAMIQUES

PARIS

8 rue des Saints-Pères 75007 PARIS
+33 1 42 33 68 06 paris@latelier55.com

97 rue des Rosiers 94400 SAINT-OUEN- SUR- SEINE
+33 1 47 87 61 01 saint-ouen@latelier55.com

SAINT-TROPEZ

50 boulevard Louis Blanc 83990 SAINT-TROPEZ
+33 4 94 97 01 78 galerie@latelier55.com

MEGEVE

57 passage des 5 rues 74120 MEGEVE
+33 4 50 78 00 07 megeve@latelier55.com

Contact exhibition : Salome Limbach - Dumas salome@latelier55.com

 latelier55_officiel

www.latelier55.com